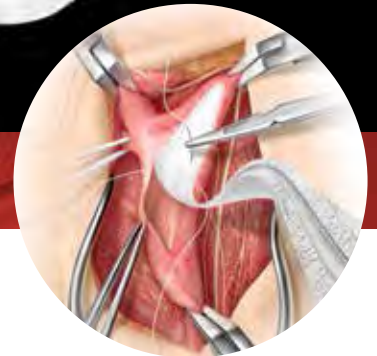


We Have Closed the Gap

on Suture Line Leakage



Features and Benefits

Reduces suture hole bleeding*

Ease of handling: conformable

Low thrombogenicity

High strength

Resterilizable

Non-biologic

Non-fraying

**Data on file*



PERFORMANCE
through experience

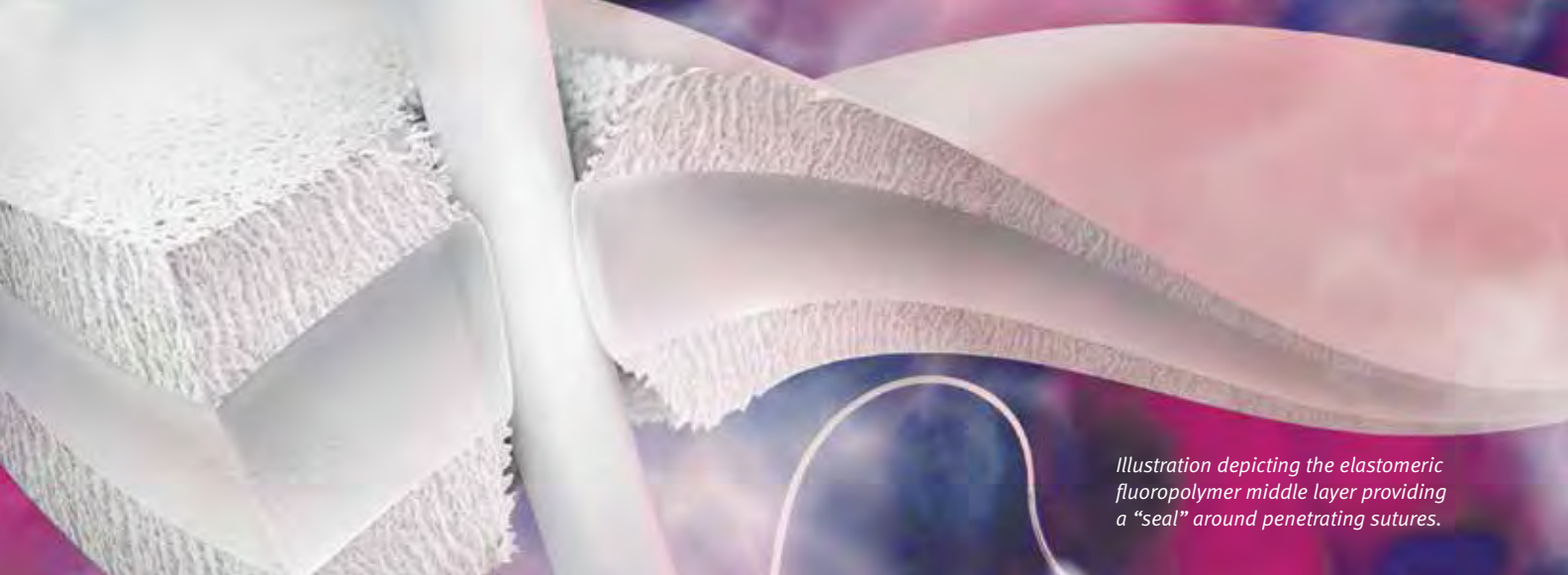
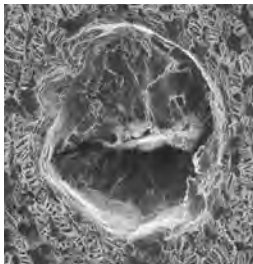
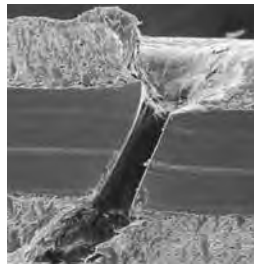


Illustration depicting the elastomeric fluoropolymer middle layer providing a "seal" around penetrating sutures.



Surface view
250x magnification



Cross-section view
100x magnification

Surface and cross-sectional Scanning Electron Micrographs show the sealing effect of the elastomeric fluoropolymer where pierced.

▶ SIZES AVAILABLE

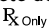
APPLICATION	CATALOGUE NUMBER	WIDTH x LENGTH	THICKNESS
Vascular	1CVX002	1 cm x 9 cm	0.5 mm
	1CVX003	0.8 cm x 7.5 cm	0.5 mm
	1CVX004	2.5 cm x 15 cm	0.5 mm
Cardiac	1CVX101	3 cm x 6 cm	0.5 mm
	1CVX102	5 cm x 7.5 cm	0.5 mm
	1CVX103	3 cm x 3 cm	0.5 mm



W. L. GORE & ASSOCIATES, INC.
Flagstaff, AZ 86004

+65.67332882 (Asia Pacific) 800.437.8181 (United States)
00800.6334.4673 (Europe) 928.779.2771 (United States)

goremedical.com

INDICATIONS FOR USE: For use in cardiovascular patching. **CONTRAINDICATIONS:** There are no known contraindications. Refer to *Instructions for Use* at goremedical.com for a complete description of all contraindications, warnings, precautions and adverse events. 

Products listed may not be available in all markets.

GORE®, ACUSEAL®, PERFORMANCE THROUGH EXPERIENCE, and designs are trademarks of W. L. Gore & Associates.
© 2014 W. L. Gore & Associates, Inc. AH1341-EN4 JUNE 2014