



Ophthalmologic Surgery

On the frontline
of technology
and experience

san
tec

Atramat
Innovation Through Experience

Ophthalmologic Surgery

Atramat® sutures allow ophthalmic surgeons to obtain the best results for their patients. Our wide portfolio of sutures for ophthalmology includes absorbable and non-absorbable sutures. The high precision required in ophthalmic procedures is guaranteed thanks to our high precision, atraumatic needles.

Surgical procedures

- Cataract
- Corneal wound
- Retinal detachment
- Eye fixation
- Strabismus
- Glaucoma
- Surgical capsulotomy
- Removal of pterygium
- Removal of eyelid tumor
- Goniotomy
- Corneal transplant
- Oculoplasty
- Ectropion
- Iris reconstruction
- Blepharoplasty
- Trabeculectomy

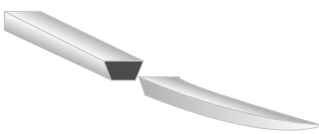
	Polypropylene	Nylon	Polyester	Silk	PGLA90	PGA
Cornea	✓	✓		✓		
Muscle			✓		✓	✓
Esclera	✓	✓			✓	✓
Retinal detachment surgery			✓			
Iris	✓	✓				
Conjunctiva					✓	✓
Eye surgical repair	✓	✓		✓		
Subdermal closure					✓	✓
Skin closure	✓	✓				

Needles

Atramat® has a variety of needles made from the best surgical steel and manufactured with high precision sharpening technology which allows firm penetration through tissue whilst reducing tissue trauma and favoring an excellent healing process.

1/2 circle needle: used to access deeper tissues which require a minimum space for control.

1/4, 3/8 circle needle: useful in surface tissues and for excellent control.



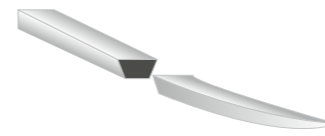
Point

Cutting pattern

Spatula SupraGlyde "E-E"

- Atramat® introduces its new spatula SupraGlyde needle with an innovative coating that provides enhanced performance and facilitates tissue penetration in ophthalmologic surgery.
- A flat and thin spatula needle with lateral bottom cutting edges that allow easy tissue penetration with minimal trauma and reduced risk of accidental penetration into deeper tissues, making it ideal for ophthalmic procedures.
- The high quality steel gives this needle strength and ductility, reducing the risk of deformation and rupture.
- Its flattened body allows it to be held firmly in the needle holder proving greater control during the penetration into ocular tissues.

Needles

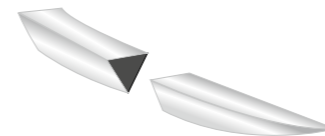


Point

Cutting pattern

Spatula Premium "E"

- A flat, thin spatula needle with lateral bottom cutting edges that allow for smooth tissue penetration with minimal trauma and reduced the risk of accidental penetration into deeper tissues, making it ideal for ophthalmic procedures.
- The high quality steel gives this needle strength and ductility, reducing the risk of deformation and rupture.
- Its flattened body allows it to be held firmly in the needle holder providing greater control during the penetration of ocular tissues.



Point

Cutting pattern

Reverse cutting Premium "P"

- Cutting needle characterized by its triangular shaped cutting pattern and cutting edge on the outer part of the needle body curve. Used primarily in skin closure.

Atramat® Cataract Kit



The Atramat® Cataract Kit is a special suture set developed for cataract surgery. This kit consists of the following high tensile strength surgical sutures:

- Cutting needle, Silk thread: CE1334-45 gauge 4-0, circle 3/8
- Premium spatula needle, Nylon thread: EE64100/2-30 N gauge 10-0, circle 3/8, double armed.



Ophthalmologic Surgery

Absorbable Sutures

Ophthalmologic Surgery

Non Absorbable Sutures

Atramat® PGA
Polyglycolic acid

Tensile strength: 70% after two week and 50% after three weeks

Absorbable

Braided

Total absorption 60 - 90 days

Material: composed of Homopolymer filaments of glycolic acid
Coating: Polycaprolactone and calcium stearate
Absorption: Hydrolysis
Thread color: Violet or undyed

Characteristics:

- Minimal inflammatory reaction in tissue.
- Excellent knot safety.
- Superior handling.
- The violet color provides excellent visibility in the surgical field.

Atramat® Polyester

Non-absorbable

Braided

Material: Polyester fibers prepared from terephthalic acid or its esters and ethylene glycol
Coating: Silicone, Teflon
Thread color: White, green

Characteristics:

- Ideal as a permanent support without loss of tensile strength.
- Excellent knot coupling knot security.
- Biocompatibility, softness, and minimal tissue drag.

Atramat® PGLA90
Poly(glycolide-co-L-lactide)

Tensile strength: 75% after two weeks

Absorbable

Braided

Total absorption 60 - 80 days

Material: composed of Copolymer of glycolic acid and L-lactide [poly(glycolide-co-L-lactide)]
Coating: Poly(glycolide-co-L-lactide) and calcium stearate
Absorption: Hydrolysis
Thread color: Violet or Beige (undyed)

Characteristics:

- Minimal inflammatory reaction in tissue.
- Excellent knot safety.
- Superior handling.
- The violet color provides excellent visibility in the surgical field.

Atramat® Polypropylene

Non-absorbable

Monofilament

Material: Isotactic stereoisomer of polypropylene homopolymer.
Thread color: Blue

Characteristics:

- Minimal tissue reaction
- Computer controlled extrusion technology ensures a uniform diameter that provides smooth passage through tissue, minimizing tissue drag.
- Ideal as a permanent support without loss of tensile strength.
- Biocompatibility, softness, plastic deformation.
- Excellent knot coupling and knot security.
- Resistant to reaction with infected tissue which means it can be used on contaminated or infected wounds.

Non Absorbable Sutures

Atramat® Silk

Non-absorbable

Braided

Material: Fibroin (organic protein derived from the bombyx mori silkworm)
Coating: Silicone
Thread color: Black, blue, white

Characteristics:

- State-of-the-art manufacturing process ensures compact braiding and high tensile strength.
- Superior handling.
- Excellent knot security.

Atramat® Nylon

Non-absorbable

Monofilament

Material: 6 or 6.6 aliphatic polyamide
Gradual loss of tensile strength over time
Thread color: Blue, black

Characteristics:

- Minimal tissue reaction, excellent quality raw material.
- The thread passes smoothly through tissue with minimal tissue drag.
- The monofilament design means stitches can be removed easily without dragging microorganisms.

Ophthalmologic Surgery

Needle-thread combinations



Material	Type	Needle		Gauge	Thread	
		Length mm	Curvature		Color	Length cm
PGA	Spatula Premium	6 - 9 mm	1/4, 3/8	8-0 to 5-0	Undyed Violet	30-45
PGLA90	Spatula Premium	6 - 9 mm	1/4, 3/8	8-0 to 6-0	Violet	30-45
Polypropylene	Spatula Premium	6 - 9 mm	1/4	10-0	Blue	20
		6 - 9 mm	3/8 Straight	10-0	Blue	30
Polyester	Spatula Premium	6 - 9 mm	1/4	5-0	Green / White	45
Nylon	Spatula Premium	6 - 9 mm	1/2, 3/8	10-0 to 9-0	Black	30
Silk	Spatula Premium	6 - 9 mm	3/8	8-0	Blue	30-45

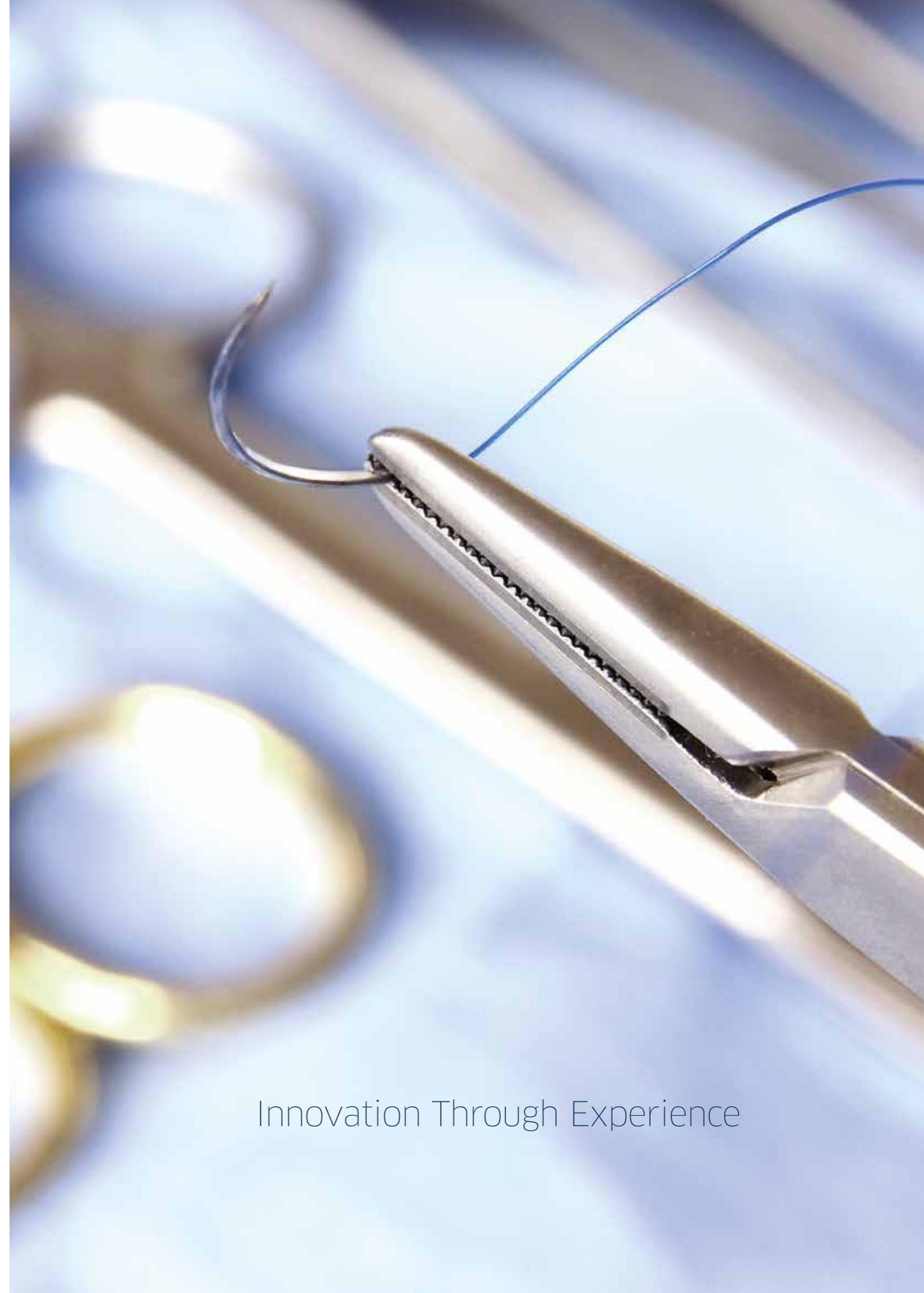
Ophthalmologic Surgery

Needle-thread combinations

Material	Needle		Gauge	Thread		
	Type	Length mm		Curvature	Color	Length cm
PGA	Spatula SupraGlyde	6 - 9 mm	1/4, 3/8	8-0 to 5-0	Undyed Violet	30-45
PGLA90	Spatula SupraGlyde	6 - 9 mm	1/4, 3/8	8-0 to 6-0	Violet	30-45
Polypropylene	Spatula SupraGlyde	6 - 9 mm	1/4	10-0	Blue	20
		6 - 9 mm	3/8 Straight	10-0	Blue	30
Polyester	Spatula SupraGlyde	6 - 9 mm	1/4	5-0	Green / White	45
Nylon	Spatula SupraGlyde	6 - 9 mm	1/2, 3/8	10-0 to 9-0	Black	30
Silk	Spatula SupraGlyde	6 - 9 mm	3/8	8-0	Blue	30-45

Material	Needle		Gauge	Thread		
	Type	Length mm		Curvature	Color	Length cm
Polypropylene	Reverse Cutting Premium	11-26 mm	3/8	6-0 to 3-0	Blue	45
Nylon	Reverse Cutting Premium	11-26 mm	3/8	6-0 to 3-0	Black	45
Silk	Reverse Cutting Premium	11-26 mm	3/8	6-0 to 3-0	Black	45

Material	Needle		Gauge	Thread		
	Type	Length mm		Curvature	Color	Length cm
Polypropylene	Reverse Cutting Supra Sharp	11-26 mm	3/8	6-0 to 3-0	Blue	45
Nylon	Reverse Cutting Supra Sharp	11-26 mm	3/8	6-0 to 3-0	Black	45
Silk	Reverse Cutting Supra Sharp	11-26 mm	3/8	6-0 to 3-0	Black	45



Innovation Through Experience

Santec Medicalprodukte GmbH

Babenhäuser Straße 45, 63762 Großostheim / Germany
Phone: +49 6026 999203-0 Fax: +49 6026 999203-29
info@santec-medical.de
www.santec-medical.de

Internacional Farmacéutica S.A . de C.V

Carreteraco 44, Col. Parque San Andres, Del. Coyoacan,
Ciudad de Mexico, CP 04040. MEXICO.
Phone +52 55 54841700
customer.care@atramat.com
www.atramat.com