



Plastic Surgery

On the frontline
of technology
and experience

san
tec

Atramat
Innovation Through Experience

Plastic Surgery

Atramat® surgical sutures allow plastic, aesthetic and reconstructive surgery specialists to obtain the best results for their patients. Our wide portfolio of specialty sutures consists of absorbable and non-absorbable sutures including synthetic materials that reduce the immune response for more aesthetic results.

Surgical procedures

- Abdominoplasty (reduction of abdomen)
- Blepharoplasty
- Increase mammoplasty
- Mammary Pexia
- Breast reduction
- Rhinoplasty
- Otoplasty
- Lobuloplasty
- Ritidectomy
- Mentoplasty
- Brachioplasty
- Breast reconstruction
- Facial and body plastic surgery
- Gynecomastia / Breast reduction in men

	PGC25	PGC25 Plus	PGLA90	PGLA90 Rapid	PGLA90 Plus	PDX
Abdominoplasty (reduction of abdomen)	✓	✓	✓		✓	✓
Blepharoplasty	✓			✓		
Increase mammoplasty	✓	✓	✓		✓	✓
Mammary Pexia	✓	✓	✓		✓	✓
Breast reduction	✓	✓	✓		✓	✓
Rhinoplasty				✓		
Otoplasty				✓		
Lobuloplasty				✓		
Ritidectomy	✓	✓	✓		✓	✓
Mentoplasty				✓		
Brachioplasty	✓	✓			✓	✓
Breast reconstruction	✓	✓	✓		✓	✓
Facial and body plastic surgery	✓	✓	✓	✓	✓	✓
Gynecomastia / Breast reduction in men	✓	✓	✓		✓	✓

	PDX Plus	PGA	PGA Rapid	Polypropylene	Nylon
Abdominoplasty (reduction of abdomen)	✓	✓		✓	✓
Blepharoplasty			✓	✓	✓
Increase mammoplasty	✓	✓		✓	✓
Mammary Pexia	✓	✓		✓	✓
Breast reduction	✓	✓		✓	✓
Rhinoplasty			✓		
Otoplasty			✓	✓	✓
Lobuloplasty			✓		
Ritidectomy	✓	✓		✓	✓
Mentoplasty			✓		
Brachioplasty	✓	✓		✓	✓
Breast reconstruction	✓	✓		✓	✓
Facial and body plastic surgery	✓	✓	✓	✓	✓
Gynecomastia / Breast reduction in men	✓	✓		✓	✓

Plastic Surgery Needles

Cutting AtraGlide "HP"

Evolution in geometric design

• Geometry, sharpness and technology combine to provide outstanding performance, excellent penetration and smooth passage through tissue in plastic, aesthetic and reconstructive surgery.

• The stylized, diamond-shaped tip facilitates penetration whilst maintaining control.

• Its four cutting axes are widened and elongated to improve penetration, subsequently blending back into the needle body thereby reducing tissue trauma.

• An excellent alternative in plastic, aesthetic and reconstructive surgery.



Point



Cutting pattern

Reverse Cutting Supra-Sharp "P-P"

• A cutting needle characterized by its triangular shaped cutting pattern with the cutting edge on the outer part of the needle body.

• Tapered vertices provide improved penetration.

• An excellent alternative in plastic, aesthetic and reconstructive surgery and in general in skin closure where a cosmetic result is required.



Point



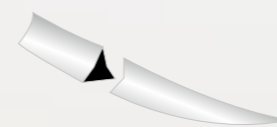
Cutting pattern

Conventional Cutting Supra-Sharp "P-Q"

• Cutting needle characterized by its triangular shaped cutting pattern with cutting edge on the inner part of the needle body.

• Tapered vertices provide improved penetration.

• Excellent alternative in plastic, aesthetic and reconstructive surgery and in general in skin closure where a cosmetic result is required.



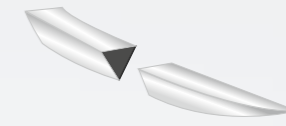
Point



Cutting pattern

Reverse Cutting Premium "P"

• A cutting needle characterized by its triangular shaped cutting pattern with the cutting edge on the outer part of the needle body.



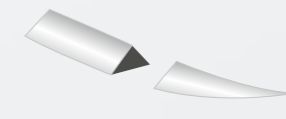
Point



Cutting pattern

Conventional Cutting Premium "Q"

• A cutting needle characterized by its triangular shaped cutting with the cutting edge on the inner part of the needle body.



Point



Cutting pattern



Plastic Surgery Absorbable Sutures

Atramat® PDX
P-dioxanone

Absorbable

Tensile strength: 70% after four weeks and 50% after six weeks

Monofilament

Total absorption 180 - 220 days

Material: composed of P-dioxanone monomer
Absorption: Hydrolysis
Thread color: Violet or undyed

- Characteristics:**
- Minimal inflammatory reaction in tissue.
 - Excellent knot safety.
 - Superior handling.
 - The violet color provides excellent visibility in the surgical field.

Atramat® PGA
Polyglycolic acid

Absorbable

Tensile strength: 70% after two week and 50% after three weeks

Braided

Total absorption 60 - 90 days

Material: composed of Homopolymer filaments of glycolic acid
Coating: Polycaprolactone and calcium stearate
Absorption: Hydrolysis
Thread color: Violet or undyed

- Characteristics:**
- Minimal inflammatory reaction in tissue.
 - Excellent knot safety.
 - Superior handling.
 - The violet color provides excellent visibility in the surgical field.

Atramat® PGA Rapid
Polyglycolic acid quick absorption

Absorbable

Tensile strength: 50% after one week

Braided

Total absorption 42 days

Material: composed of low molecular weight homopolymer filaments of glycolic acid
Coating: Polycaprolactone and calcium stearate
Absorption: Hydrolysis
Thread color: Undyed

- Characteristics:**
- Minimal inflammatory reaction in tissue
 - Excellent knot safety
 - Superior handling

Atramat® PGLA90
Poly(glycolide-co-L-lactide)

Absorbable

Tensile strength: 75% after two weeks

Braided

Total absorption 60 - 80 days

Material: composed of Copolymer of glycolic acid and L-lactide [poly(glycolide-co-L-lactide)]
Coating: Poly(glycolide-co-L-lactide) and calcium stearate
Absorption: Hydrolysis
Thread color: Violet or Beige (undyed)

- Characteristics:**
- Minimal inflammatory reaction in tissue.
 - Excellent knot safety.
 - Superior handling.
 - The violet color provides excellent visibility in the surgical field.

Atramat® PGC25
Poly(glycolide-co-epsilon-caprolactone)

Absorbable

Tensile strength Violet: 68% after one week and 41% after two week

Violet | Total absorption 110 days

Monofilament

Tensile strength undyed: 79% after one week and 40 % after two week

Undyed | Total absorption 90 days

Material: composed of Copolymer of glycolide and caprolactone [poly(glycolide-co-epsilon-caprolactone)]
Absorption: Hydrolysis
Thread color: Violet or undyed

- Characteristics:**
- Minimal inflammatory reaction in tissue.
 - Excellent knot safety.
 - Superior handling.

Atramat® PGLA90 Rapid
Poly(glycolide-co-L-lactide)

Absorbable

Tensile strength: 50% after one week

Braided

Total absorption 42 days

Material: composed of Copolymer of glycolic acid and L-lactide [poly(glycolide-co-L-lactide)]
Coating: Poly(glycolide-co-L-lactide) and calcium stearate
Absorption: Hydrolysis
Thread color: Beige (undyed)

- Characteristics:**
- Minimal inflammatory reaction in tissue
 - Excellent knot safety
 - Superior handling

Sutures with Antibacterial Coating

Atramat® PGC25 Plus
Poly(glycolide-co-epsilon-caprolactone) Antibacterial Suture

Absorbable

Tensile strength: 70% after one week and 50% after two weeks

Monofilament

Total absorption 110 days

Material: composed of Co-polymer of glycolide and caprolactone [Poly (glycolide-co-epsilon-caprolactone)]
Antibacterial coating: Chlorhexidine diacetate
Absorption: Hydrolysis
Thread color: Violet or undyed

- Characteristics:**
- Chlorhexidine diacetate is a broad spectrum antibacterial agent that inhibits the growth of bacteria such as Staphylococcus aureus, Staphylococcus epidermidis and Escherichia coli.
 - Minimal inflammatory reaction in tissue
 - High knot security
 - Superior handling
 - Violet color provides excellent visibility in the surgical field.

Atramat® PDX Plus
Polydioxanone Antibacterial Suture

Absorbable

Tensil strength: 70% after four weeks and 50% after six weeks

Monofilament

Total absorption 180 - 210 days

Material: composed of P-dioxanone monomer
Antibacterial coating: Chlorhexidine diacetate
Absorption: Hydrolysis
Thread color: Violet

- Characteristics:**
- Chlorhexidine diacetate is a broad spectrum antibacterial agent that inhibits the growth of bacteria such as Staphylococcus aureus, Staphylococcus epidermidis and Escherichia coli.
 - Minimal inflammatory reaction in tissue
 - High knot security
 - Superior handling
 - Violet color provides excellent visibility in the surgical field.

Atramat® PGLA90 PLUS
Polyglactin 910 Poly(glycolide-co-lactide) Coated Antibacterial Suture

Absorbable

Tensil strength: 75% after two weeks and 46% after three weeks

Braided

Total absorption 56 - 70 days

Material: composed of Copolymer of glycolic acid and lactide [Poly (glycolide-co-lactide)]
Antibacterial coating: Chlorhexidine diacetate
Coating: Poly (glycolide-co-lactide) and calcium stearate
Absorption: Hydrolysis
Thread color: Violet or beige (undyed)

- Characteristics:**
- Chlorhexidine diacetate is a broad spectrum antibacterial agent that inhibits the growth of bacteria such as Staphylococcus aureus, Staphylococcus epidermidis and Escherichia coli.
 - Minimal inflammatory reaction in tissue
 - High knot security
 - Superior handling
 - Violet color provides excellent visibility in the surgical field.

Plastic Surgery Non Absorbable Sutures



Plastic Surgery Needle-thread combinations

Atramat® Nylon

Non-absorbable
Monofilament

Material: 6 or 6.6 aliphatic polyamide
Gradual loss of tensile strength over time
Thread color: Blue, black

Characteristics:

- Minimal tissue reaction, excellent quality raw material.
- The thread passes smoothly through tissue with minimal tissue drag.
- The monofilament design means stitches can be removed easily without dragging microorganisms.

Atramat® Polypropylene

Non-absorbable
Monofilament

Material: Isotactic stereoisomer of polypropylene homopolymer.
Thread color: Blue

Characteristics:

- Minimal tissue reaction
- Computer controlled extrusion process ensures a uniform diameter and smooth passage through tissue, minimizing tissue drag.
- Ideal as a permanent support without loss of tensile strength.
- Biocompatibility, softness, plastic deformation.
- Excellent knot coupling and knot security.
- Resistant to reaction with infected tissue which means it can be used on contaminated or infected wounds

Material	Type	Needle		Thread		
		Length mm	Curvature	Gauge	Color	Length cm
PDX	Reverse Cutting Premium	13-24 mm	3/8	6-0 a 2-0	Undyed Violet	45
PGC25	Reverse Cutting Premium	13-24 mm	3/8	6-0 a 2-0	Undyed Violet	45-70
PGLA90	Reverse Cutting Premium	13-24 mm	3/8	6-0 a 3-0	Beige (Undyed) Violet	45
PGLA90 Rapid	Reverse Cutting Premium	13-24 mm	3/8	5-0 a 3-0	Beige (Undyed)	45-75
PGA	Reverse Cutting Premium	11-24 mm	3/8	6-0 a 2-0	Undyed Violet	45-75
PGA Rapid	Reverse Cutting Premium	16-24 mm	3/8	5-0 a 2-0	Undyed	45-75
PGLA90 Plus	Reverse Cutting Premium	11-48 mm	3/8, 1/2	5-0 a 2-0	Undyed Violet	70-90
PGC25 Plus	Reverse Cutting Premium	13-40 mm	3/8, 1/2	6-0 a 1	Undyed	70-90
PDX Plus	Reverse Cutting Premium	13-48 mm	3/8, 1/2	6-0 a 1	Violet	45-90
Polypropylene	Reverse Cutting Premium	13-24 mm	3/8	6-0 a 3-0	Blue	45
Nylon	Reverse Cutting Premium	11-24 mm	3/8	6-0 a 3-0	Black	45

Plastic surgery Needle-thread combinations

Material	Type	Needle		Gauge	Thread	
		Length mm	Curvature		Color	Length cm
PDX	Cutting AtraGlide	11-24 mm	3/8	6-0 a 2-0	Undyed Violet	45-75
PGC25	Cutting AtraGlide	11-24 mm	3/8	6-0 a 2-0	Undyed Violet	45-70
PGLA90	Cutting AtraGlide	11-24 mm	3/8	6-0 a 2-0	Beige (Undyed) Violet	45
PGLA90 Rapid	Cutting AtraGlide	11-24 mm	3/8	6-0 a 2-0	Beige (Undyed)	45-75
PGA	Cutting AtraGlide	11-24 mm	3/8	6-0 a 2-0	Undyed Violet	45
PGA Rapid	Cutting AtraGlide	11-24 mm	3/8	6-0 a 2-0	Undyed	45-75
PGLA90 Plus	Cutting AtraGlide	11-24 mm	3/8	5-0 a 2-0	Undyed Violet	45
PGC25 Plus	Cutting AtraGlide	11-24 mm	3/8	6-0 a 2-0	Undyed	45-70
PDX Plus	Cutting AtraGlide	11-24 mm	3/8	6-0 a 2-0	Violet	45
Polipropileno	Cutting AtraGlide	11-24 mm	3/8	6-0 a 2-0	Blue	45-75
Nylon	Cutting AtraGlide	11-24 mm	3/8	6-0 a 2-0	Black	45

Material	Type	Needle		Gauge	Thread	
		Length mm	Curvature		Color	Length cm
PGC25	Cutting Premium	60 mm	Straight	3-0	Undyed Violet	70
PGLA90	Cutting Premium	60 mm	Straight	4-0 a 2-0	Beige (Undyed) Violet	70
PGLA90 Rapid	Cutting Premium	60 mm	Straight	3-0 a 2-0	Beige (Undyed)	70
PGA	Cutting Premium	60 mm	Straight	4-0 a 2-0	Undyed Violet	70
PGA Rapid	Cutting Premium	60 mm	Straight	3-0 a 2-0	Undyed	70
PGLA90 Plus	Cutting Premium	60 mm	Straight	4-0 a 2-0	Undyed Violet	70
PGC25 Plus	Cutting Premium	60 mm	Straight	4-0 a 2-0	Undyed	70
PDX Plus	Cutting Premium	60 mm	Straight	4-0 a 2-0	Violet	70
Polypropylene	Cutting Premium	60 mm	Straight	4-0 a 2-0	Blue	75
Nylon	Cutting Premium	60 mm	Straight	4-0 a 0	Black	75

Plastic Surgery

Needle-thread combinations

Material	Needle			Thread		
	Type	Length mm	Curvature	Gauge	Color	Length cm
PDX	Reverse Cutting Supra Sharp	11-24 mm	3/8	6-0 a 2-0	Undyed Violet	45
PGC25	Reverse Cutting Supra Sharp	11-24 mm	3/8	6-0 a 2-0	Undyed Violet	45-70
PGLA90	Reverse Cutting Supra Sharp	11-24 mm	3/8	6-0 a 2-0	Beige (Undyed) Violet	45
PGLA90 Rapid	Reverse Cutting Supra Sharp	11-24 mm	3/8	6-0 a 2-0	Beige (Undyed)	45-75
PGA	Reverse Cutting Supra Sharp	11-24 mm	3/8	6-0 a 2-0	Undyed Violet	45
PGA Rapid	Reverse Cutting Supra Sharp	11-24 mm	3/8	6-0 a 3-0	Undyed	45-75
PGLA90 Plus	Reverse Cutting Supra Sharp	11-24 mm	3/8	5-0 a 2-0	Undyed Violet	45
PGC25 Plus	Reverse Cutting Supra Sharp	11-26 mm	3/8	6-0 a 2-0	Undyed	45-70
PDX Plus	Reverse Cutting Supra Sharp	11-26 mm	3/8	6-0 a 2-0	Violet	45
Polypropylene	Reverse Cutting Supra Sharp	11-24 mm	3/8	6-0 a 2-0	Blue	45
Nylon	Reverse Cutting Supra Sharp	11-24 mm	3/8	6-0 a 2-0	Black	45

Material	Needle			Thread		
	Type	Length mm	Curvature	Gauge	Color	Length cm
PDX	Conventional Cutting Supra Sharp	13-19 mm	3/8	6-0 a 4-0	Undyed Violet	45
PGC25	Conventional Cutting Supra Sharp	11-24 mm	3/8	6-0 a 2-0	Undyed Violet	45-70
PGLA90	Conventional Cutting Supra Sharp	13-24 mm	3/8	6-0 a 2-0	Beige (Undyed) Violet	45
PGLA90 Rapid	Conventional Cutting Supra Sharp	16-24 mm	1/2, 3/8	4-0 a 3-0	Beige (Undyed)	45-75
PGA	Conventional Cutting Supra Sharp	13-24 mm	3/8	6-0 a 2-0	Undyed Violet	45
PGA Rapid	Conventional Cutting Supra Sharp	16-24 mm	1/2, 3/8	4-0 a 3-0	Incoloro	45-75
PGLA90 Plus	Conventional Cutting Supra Sharp	16-36 mm	3/8	5-0 a 2-0	Undyed Violet	45-70
PGC25 Plus	Conventional Cutting Supra Sharp	13-19 mm	3/8	5-0 a 4-0	Undyed Violet	45
PDX Plus	Conventional Cutting Supra Sharp	13-26 mm	3/8	6-0 a 3-0	Violet	45-70
Polypropylene	Conventional Cutting Supra Sharp	16-19 mm	3/8	6-0 a 3-0	Blue	45
Nylon	Conventional Cutting Supra Sharp	16-19 mm	3/8	6-0 a 4-0	Black	45

Santec Medicalprodukte GmbH

Babenhäuser Straße 45, 63762 Großostheim / Germany
 Phone: +49 6026 999203-0 Fax: +49 6026 999203-29
 info@santec-medical.de
 www.santec-medical.de

Internacional Farmacéutica S.A . de C.V

Carreteraco 44, Col. Parque San Andres, Del. Coyoacan,
 Ciudad de Mexico, CP 04040. MEXICO.
 Phone +52 55 54841700
 customer.care@atramat.com
 www.atramat.com